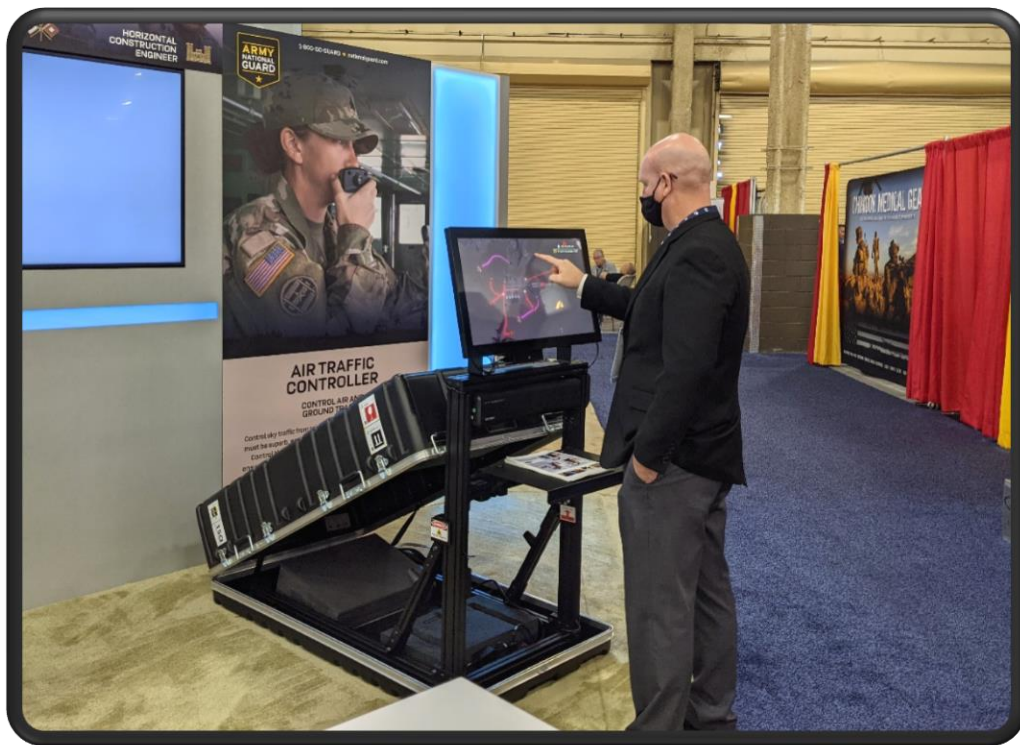




Vocational Air Traffic Controller User Guide



Contents

Air Traffic Controller System Features.....	3
Setup and Shutdown.....	3
Setup	3
Shutdown	4
Player Instructions	5
Registration	5
Directing and Landing Aircraft	6
Proximity Warning	7
Operator Instructions.....	8
Configuration Menu.....	8
Reset the High Scores Leaderboard	8
Enter and Operator Value	9
Adjust Audio volume of attract videos.	9
Data File	9
Finding the Data File	9
Troubleshooting.....	10

Air Traffic Controller System Features

Raydon's Air Traffic Controller (ATC) Experience is a tool for military recruiters to convert prospects into leads by storing lead contact information if they are within the correct age range. Contact information is stored locally on each system and can be retrieved by recruiters.

While no player is on the system, attract videos are played. These videos were supplied by the Army National Guard and relate to the Air Traffic Controller military occupational specialty.

Players are tasked with guiding aircraft to a runway or helipad with the goal of not allowing aircraft to collide. Points are gained by landing aircraft safely. The game ends when two aircraft collide. The player's score gets placed into the leaderboard. The leaderboard is displayed after each experience and induces competition between players.

The ATC Experience includes the following features:

- Gameplay is for entertainment and awareness to Air Traffic Controller military occupational specialty at recruiting events. The gameplay induces a taste of the stress an ATC operator experiences on the job.
- Lead Generator: Collects and stores contact information for prospects between the ages of 17 and 34.
- The system attracts and holds attention, giving recruiters greater opportunities to interact with prospects/leads.
- The ATC Experience promotes competition. A leaderboard is displayed between each attract video. Detailed welding results are displayed after each weld.

Setup and Shutdown

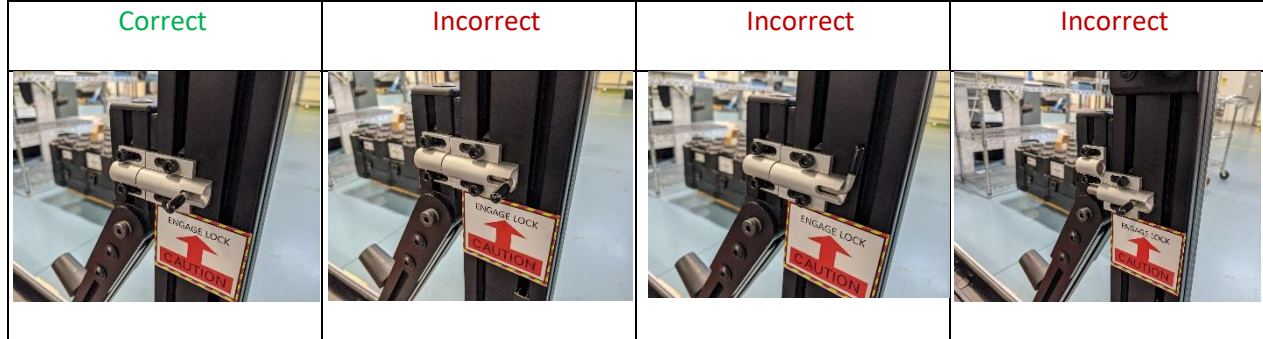
Setting up and shutting down the system takes less than 3 minutes and requires no tools.

Setup

To setup the system, follow this procedure:

1. Open the case.
 - a. With the system laying on the floor and the "This side up" labels in the correct orientation, unlatch all the case latches.
 - b. Mount each case latch to the magnets to hold the latches in place.
 - c. Open the case and allow the top section to rest on the restraints.
2. Unfold the secure the stand
 - a. Grasp the orange lifting handle and raise the stand assembly to the upright position.
 - b. While supporting the stand assembly, secure the latch on the left and the latch on the right.

Make sure each latch is properly locked into position.



3. Setup Monitor

- a. Loosen the locking knobs at the base of the monitor, rotate the touchscreen display to the upright position, and then tighten the locking knobs.



4. Install mid assembly (optional)

- a. Install the mid assembly to the cross support. Align the support hooks to the stand assembly crossbar. Push the hooks onto the crossbar to ensure it is secure.

5. Power up the system

- a. Plug in the power strip's cable into a power outlet and switch it on. After a few moments, the system will be ready to go.

Shutdown

To shutdown the system, follow this procedure:

1. Power Down

- a. Turn off the computer by briefly pressing the power button on the computer. Allow Windows 10 to go through the shutdown process before proceeding.
- b. Turn off the switch on the power supply, unplug, and stow the cable.



2. Fold down monitor

- a. Loosen the knobs at the base of the monitor while holding the monitor in place.
- b. Carefully rotate the monitor back against the frame and tighten the knobs.

Do not allow the monitor to rotate to quickly as this may cause damage.

3. Fold down the stand

- a. Unlock the two latches on the left and the right
- b. While holding the orange handle, carefully lower the stand down into the case.

Do not allow the stand to fold down quickly as this may cause damage.

4. Close the case

Make sure all accessories are stowed properly and everything is strapped into place.


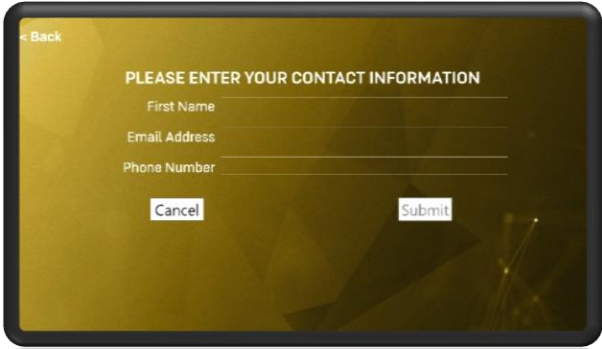
- a. Close the lid.
- b. Latch all case latches.

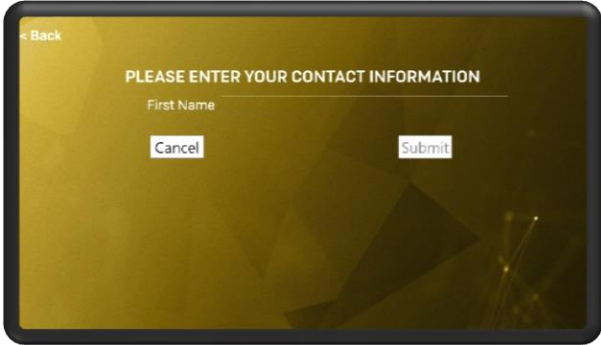
Player Instructions

The following includes instructions on how a player uses the ATC experience from start to finish.

Registration

Once a player touches the monitor, the application will enter registration mode.

	<p>The player then answers if they are within recruitment age of 17 to 34.</p> <p><i>If the Yes and No buttons are not registering properly, please try double tapping the buttons.</i></p>
	<p>If the player answered Yes to the previous question, they must then enter their contact information which includes First Name, email address, and phone number.</p> <p>Tap inside the text fields to open the touch keyboard on the bottom of the screen. Use the touch keyboard to enter contact information.</p> <p>The email address field must have "@" and "." characters to allow the user to proceed.</p> <p>Tap "Submit" to proceed to the welding experience.</p>

	<p>If the player answered No to the previous question, they only need to enter their first name.</p> <p>Tap the text field to open the touch keyboard at the bottom.</p> <p>Tap “Submit” to proceed to the welding experience.</p>
---	--

Directing and Landing Aircraft

Direct aircraft by pressing and holding a finger on the aircraft’s body than dragging finger across the screen to create a path. Re-direct the aircraft by following the same procedure.

Place the end of the aircraft’s path on the edge of the runway or the center of a helipad (depending on aircraft type) to land.

There are two types of aircraft:

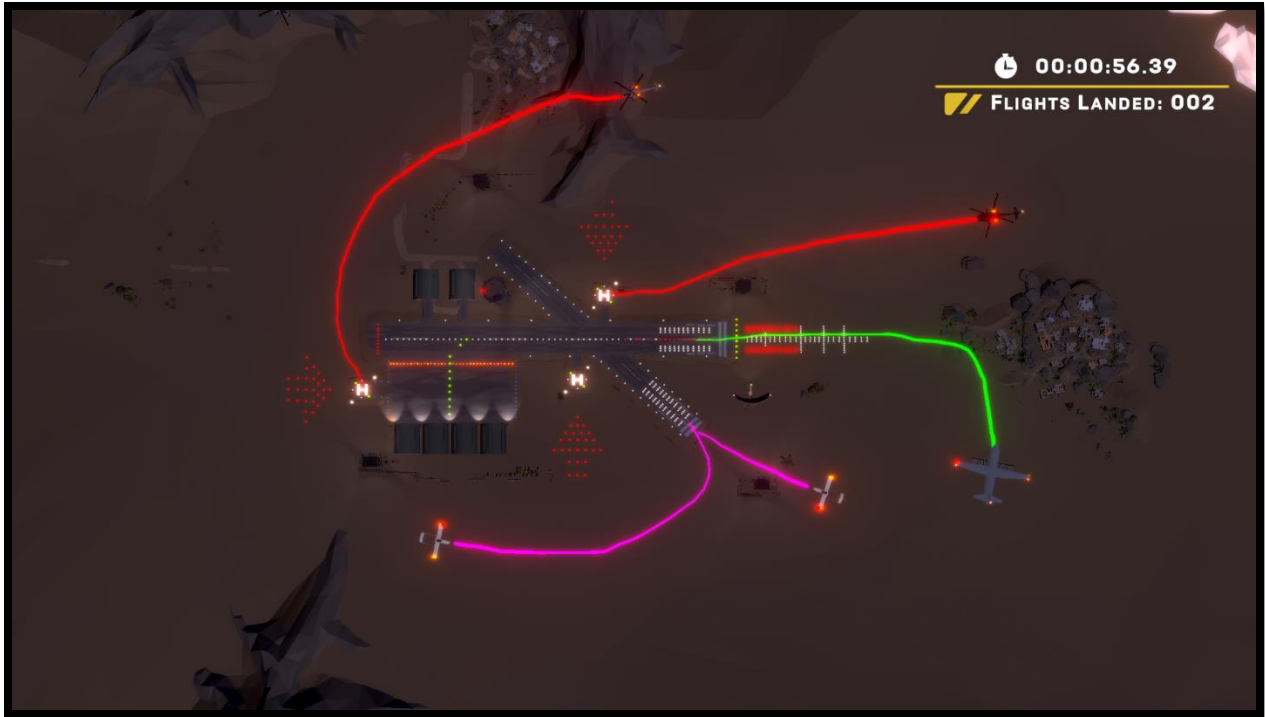
- Fixed wing
- Rotary wing

Fixed winged aircraft include the C-130 transport and RQ-7 Shadow UAV. The C-130 can only land on the large runway from the right. The C-130’s path and spawn arrow indicator are color coded as **green**.

The RQ-7 can only land on the small runway from bottom-right to top left. The RQ-7’s path and spawn arrow indicator are color coded as **purple**.

Rotary wings include the AH-64 Apache and UH-60 Blackhawk. The rotary winged aircraft may land on any helipad from any direction. The Apache and Blackhawk’s path and spawn arrow indicators are color coded as **red**.

See image below for details on aircraft landing directions:



Proximity Warning

If any two aircraft get to close, the proximity warning indicator will turn on. This warns the ATC that two or more aircraft are close together. A visual and audio cue will play.

See image below for example.



Operator Instructions

Configuration Menu

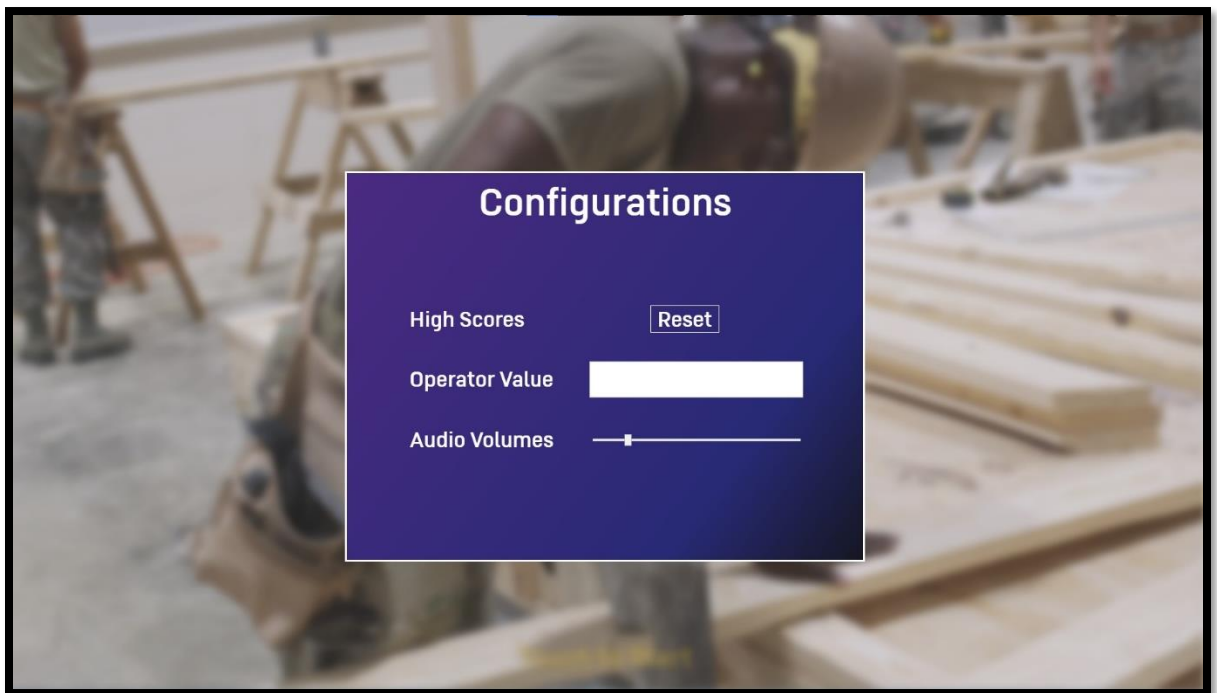
The configuration menu gives the operator several options. Please see below for more information.

To open the Configuration menu, perform the following procedure:

1. Plug in a USB keyboard into the computer.
2. If in Registration mode, please press the back button on the top left.
3. Press **Left Control + Left Shift + W** in attract mode. This will open the Configurations menu

To close the configurations menu when finished:

1. Exit the Configurations Menu by pressing "**Escape**".



Reset the High Scores Leaderboard

The leaderboard is displayed between each attract video. The Reset button in the Operator Configuration menu clears the leaderboard.

Please note this does not delete the data file. It only clears the leaderboard that is displayed in attract mode.

This feature may be useful for promoting competition. For example, if the leaderboard is cleared at the beginning of a school-based event, everyone on the leaderboard will be from the same school.

Enter and Operator Value

The Operator value is used to help organize the data file.

Type in any value in the Operator Value text field and press “Escape” to close the configurations menu.

Please see [Accessing the Data](#) file for more information on data file retrieval.

For example, if the ATC experience is going to a special event, the operator can enter the events name in the Operator Value field. Every data file entry from that point forward will be associated with the operator value. This can later be sorted by the operator value in Excel.



Adjust Audio volume of attract videos.

The Audio Volumes slider adjusts the volume of the attract videos, independent of the experience. This is useful if it is desired to increase or decrease the volume of attract vs. experience modes.

Data File


All player registration data and experience scores are stored in a .CSV data file. The data file is updated after each player’s experience.

The data file stores the following data per player:

- OperatorCustomValue – This is a string of characters input in the Configurations menu.
- FirstName – First name entered by the player
- EmailAddress – Email Address entered by the player
- RecrutableAge – True or False. True if player entered Yes for the 17 to 34 age question.
- PhoneNumber – Phone number entered by the player.
- ExperienceName – Name of Experience. This is useful if combining the data file with other data files from different experiences.
 - ATC – Air Traffic Controller
 - ATC – Air Traffic Control
 - MTO – Motor Transport Operator
 - HCE – Horizontal Construction Engineer
 - ITS – Information Technology Specialist
- Score – Score received in experience.
- StartTime – Time the player started the experience.
- EndTime – Time the player finished the experience.

Finding the Data File

To find the data file, perform the following procedure:

1. Plug in a USB keyboard into the computer.
1. If in Registration mode, please press the back button on the top left.
2. Press “**Escape**” in attract mode to exit the application.
3. Open File Explorer 
4. Navigate to:

C:\Users\<<user name>\AppData\Local\Raydon\Recruitment\CSV

5. See file “**recruits.csv**”. This is the data file.

Please follow Department of Defense guidelines for copying the file to another computer. Alternatively, the data file can be opened on the ATC system to be viewed/photographed.

Troubleshooting

Please see the following table for troubleshooting steps.

Problem	Possible Solution(s)
Unclear/Staticky Audio	<ul style="list-style-type: none"> • Check the auxiliary connection on the back of the computer.
No audio	<ul style="list-style-type: none"> • Increase soundbar volume. • Check the power on the soundbar. • Check that the AUX input is selected on the soundbar.
Registration Buttons not working	<ul style="list-style-type: none"> • Double tap the registration button if a single tap does not progress to the next section.